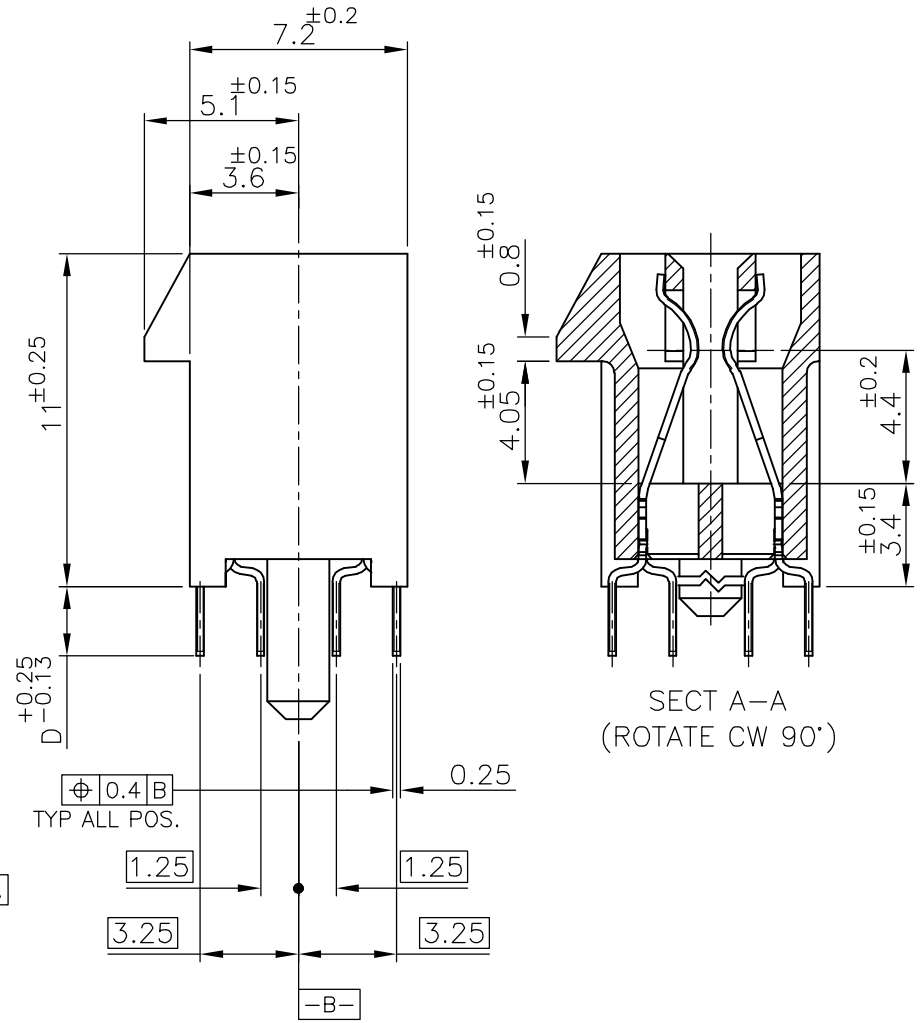
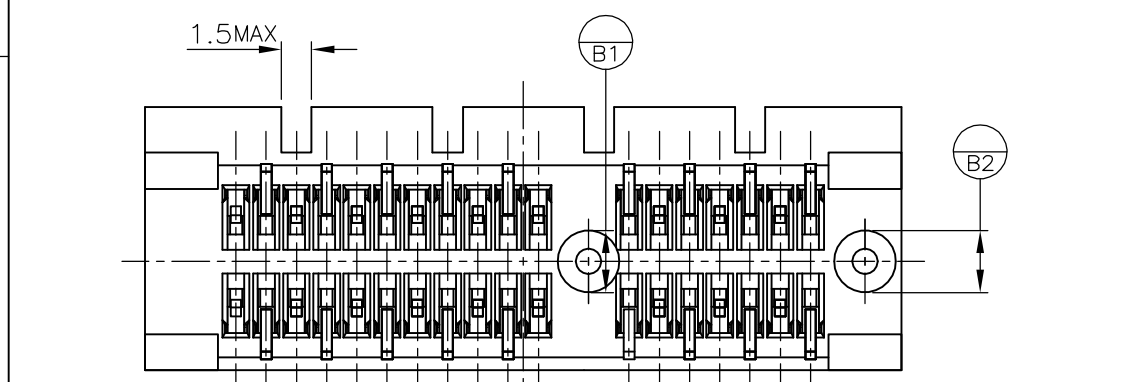
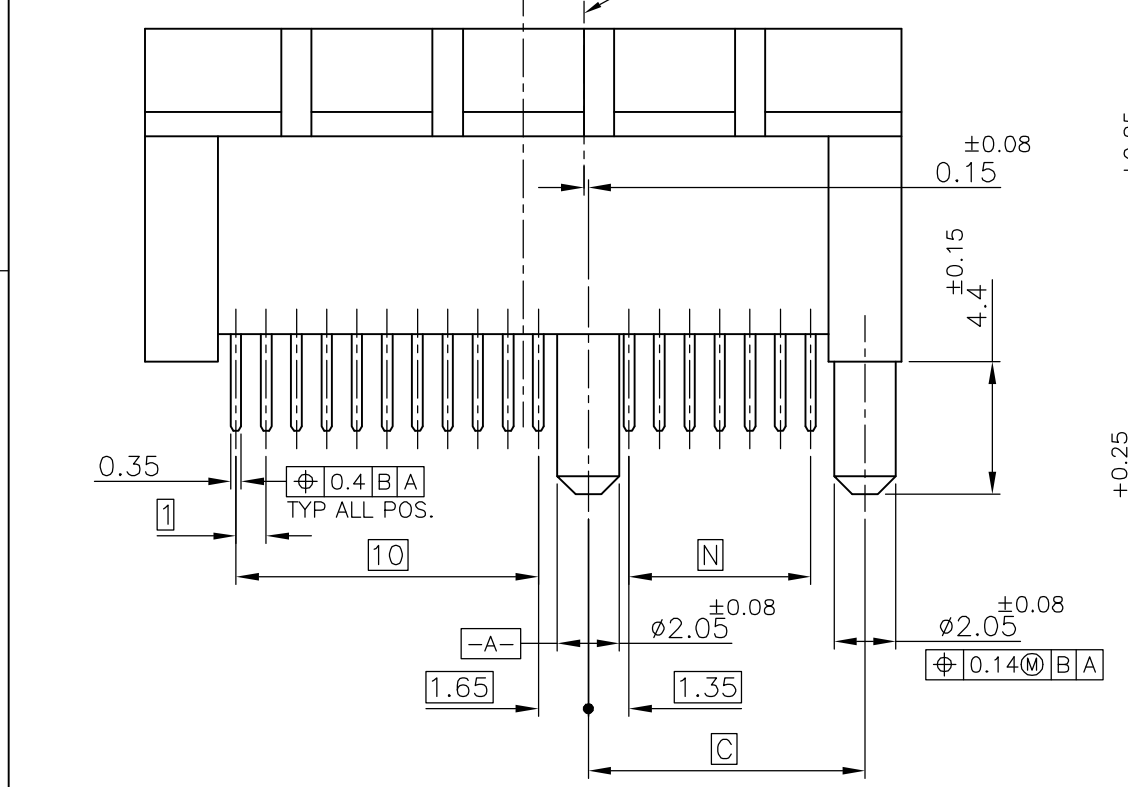
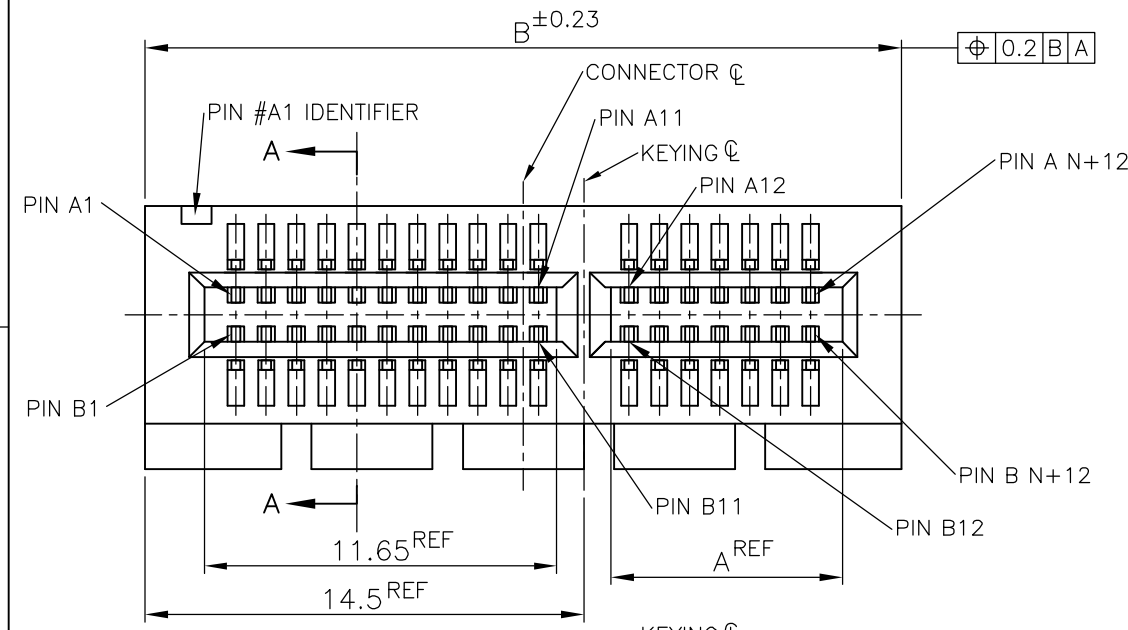


THIS DRAWING IS UNPUBLISHED. RELEASED FOR PUBLICATION FEB. 2003.
 © COPYRIGHT 2003 BY TYCO ELECTRONICS CORPORATION. ALL RIGHTS RESERVED.

LOC		DIST		REVISIONS					
DW				P	LTR	DESCRIPTION	DATE	DWN	APVD
					J	REVISED ECR-06-017657	12SEP06	S.H	W.K

- 1 MATERIAL;
HOUSING: HIGH TEMPERATURE THERMO PLASTIC
UL94V-0, COLOR; BLACK
CONTACT: COPPER ALLOY
- 2 FINISH;
CONTACT AREA: GOLD PL. 0.05 μm MIN OVER NICKEL PL.
TINE AREA: MATTE TIN PL. OVER NICKEL PL.
- 3 FINISH;
CONTACT AREA: GOLD PL. 0.38 μm MIN OVER NICKEL PL.
TINE AREA: MATTE TIN PL. OVER NICKEL PL.
- 4 FINISH;
CONTACT AREA: GOLD PL. 0.76 μm MIN OVER NICKEL PL.
TINE AREA: MATTE TIN PL. OVER NICKEL PL.

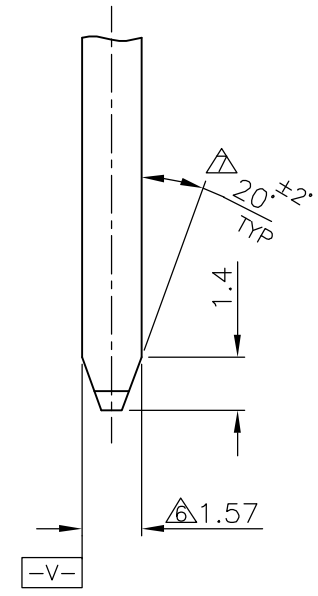
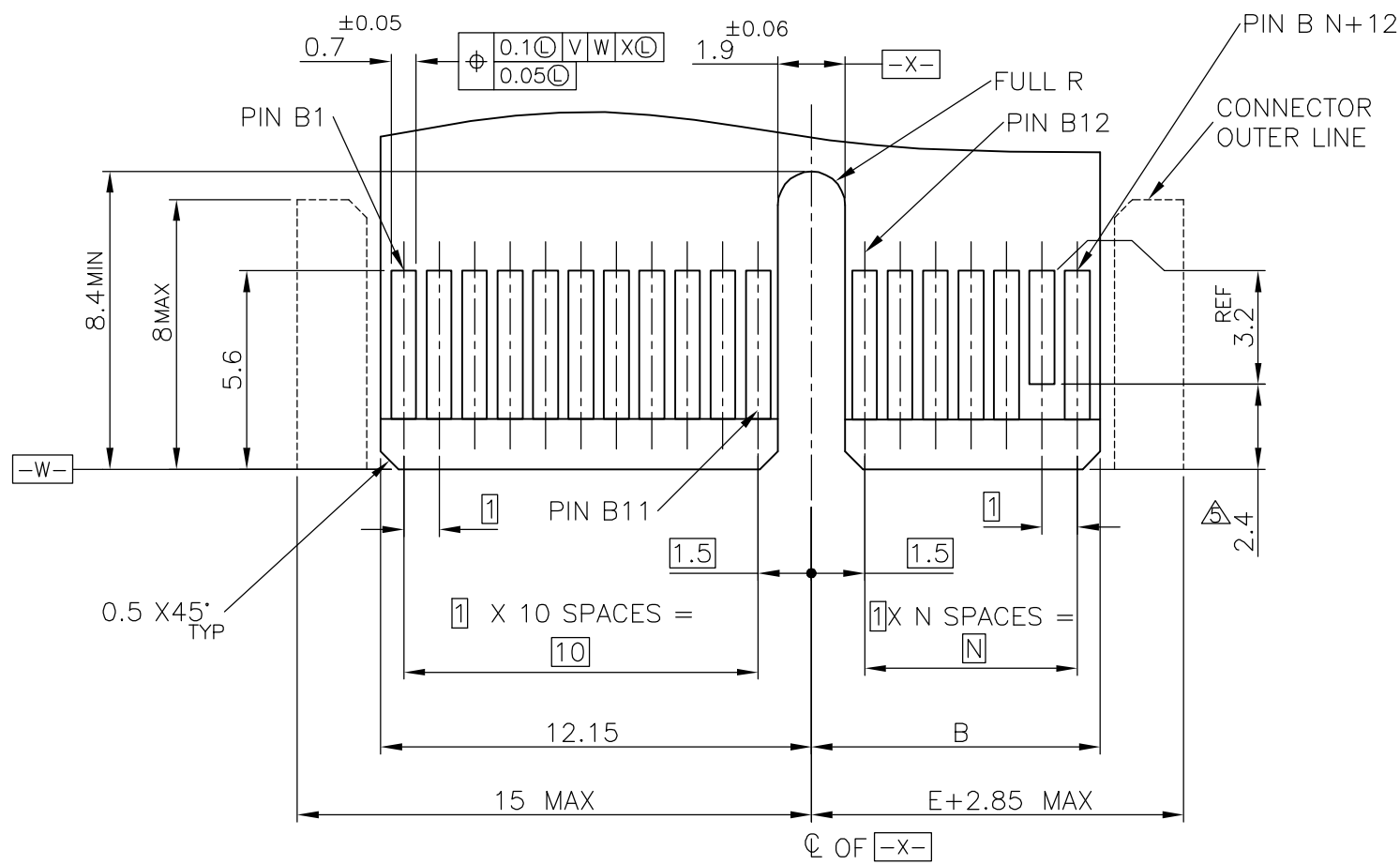


PRODUCING	↑	70	↑	73.15	89	71.65	164	16	8-	↑	-4
PRODUCING		37		40.15	56	38.65	98	8	8-		-3
PRODUCING		20		23.15	39	21.65	64	4	8-		-2
PRODUCING	△4	6		9.15	25	7.65	36	1	8-1612163-1		
PRODUCING	↑	70		73.15	89	71.65	164	16	6-	↑	-4
PRODUCING		37		40.15	56	38.65	98	8	6-		-3
PRODUCING		20		23.15	39	21.65	64	4	6-		-2
PRODUCING	△2	6	3.56	9.15	25	7.65	36	1	6-1612163-1		
PRODUCING	↑	70	↑	73.15	89	71.65	164	16	5-	↑	-4
PRODUCING		37		40.15	56	38.65	98	8	5-		-3
PRODUCING		20		23.15	39	21.65	64	4	5-		-2
PRODUCING		6	3.1	9.15	25	7.65	36	1	5-1612163-1		
PRODUCING		70	↑	73.15	89	71.65	164	16	4-	↑	-4
PRODUCING		37		40.15	56	38.65	98	8	4-		-3
PRODUCING		20		23.15	39	21.65	64	4	4-		-2
PRODUCING	△4	6	2.3	9.15	25	7.65	36	1	4-1612163-1		
PRODUCING	↑	70	↑	73.15	89	71.65	164	16	3-	↑	-4
PRODUCING		37		40.15	56	38.65	98	8	3-		-3
PRODUCING		20		23.15	39	21.65	64	4	3-		-2
PRODUCING		6	3.1	9.15	25	7.65	36	1	3-1612163-1		
PRODUCING		70	↑	73.15	89	71.65	164	16	2-	↑	-4
PRODUCING		37		40.15	56	38.65	98	8	2-		-3
PRODUCING		20		23.15	39	21.65	64	4	2-		-2
PRODUCING	△3	6	2.3	9.15	25	7.65	36	1	2-1612163-1		
PRODUCING	↑	70	↑	73.15	89	71.65	164	16	1-	↑	-4
PRODUCING		37		40.15	56	38.65	98	8	1-		-3
PRODUCING		20		23.15	39	21.65	64	4	1-		-2
PRODUCING		6	3.1	9.15	25	7.65	36	1	1-1612163-1		
PRODUCING		70	↑	73.15	89	71.65	164	16		↑	-4
PRODUCING		37		40.15	56	38.65	98	8			-3
PRODUCING		20		23.15	39	21.65	64	4			-2
PRODUCING	△2	6	2.3	9.15	25	7.65	36	1			1612163-1
TOOLING STATUS	FINISH	N	D	C	B	A	POS.	PORT	P/N		

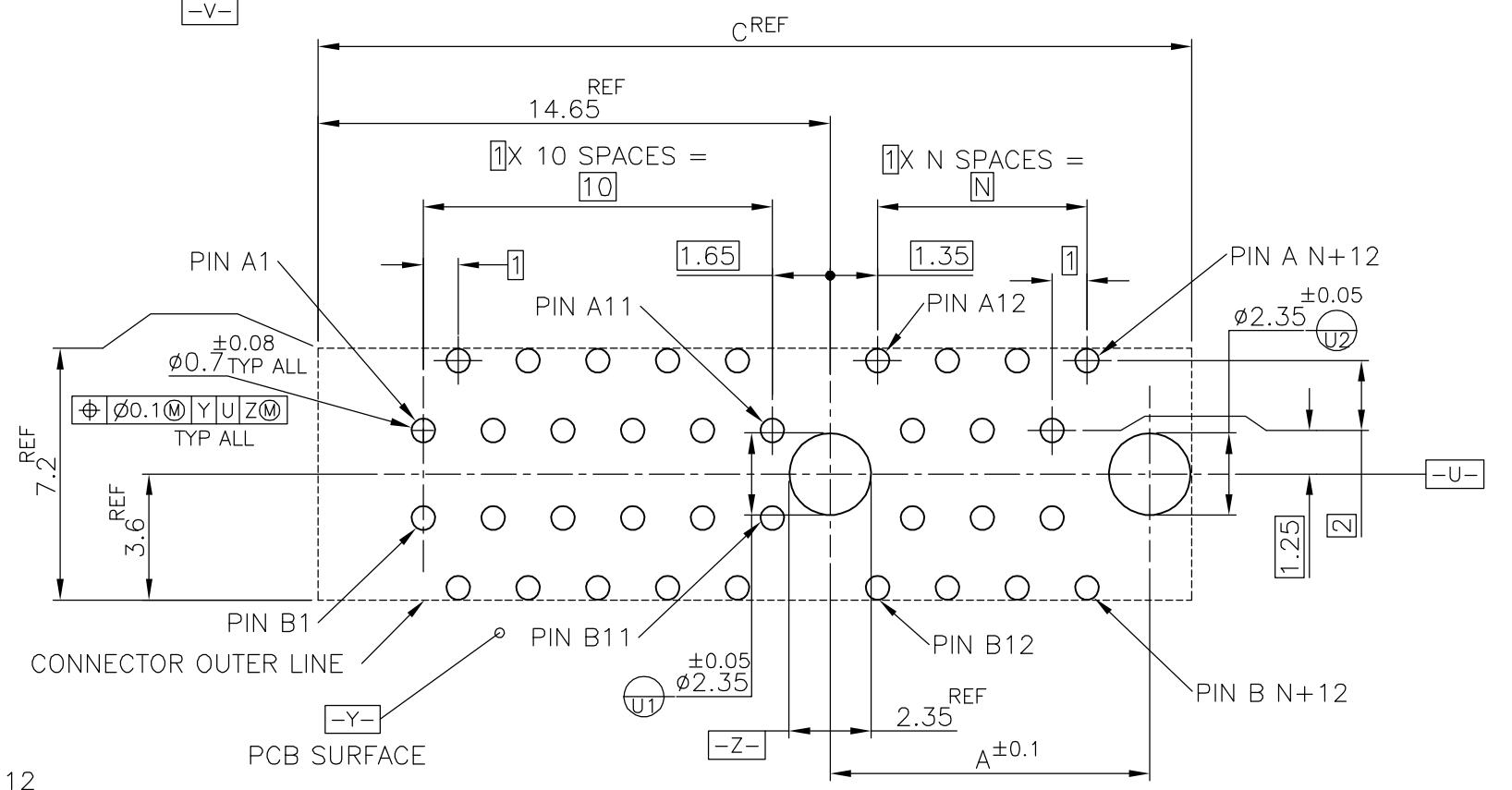
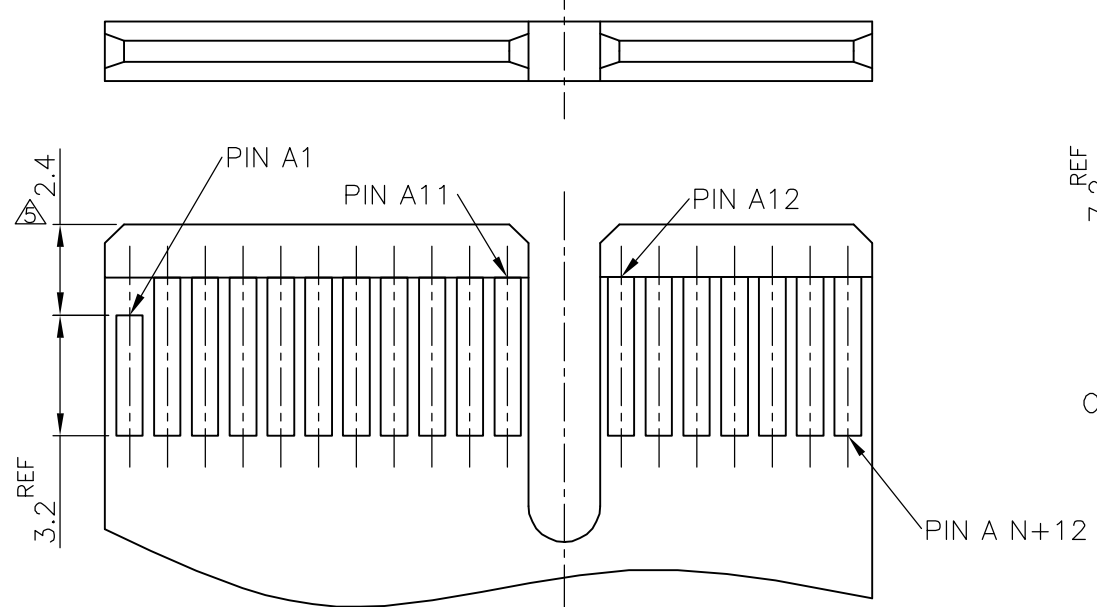
THIS DRAWING IS A CONTROLLED DOCUMENT.		DWN K.KOBAYASHI 20FEB03	Tyco Holdings (Bermuda) VII LTD, Taiwan Branch
DIMENSIONS: MM		CHK H.SHIRAI 21FEB03	
TOLERANCES UNLESS OTHERWISE SPECIFIED:		APVD Y.YAMAMOTO 21FEB03	
0-PLC ± ±0.3 1-PLC ± ±2 2-PLC ± ± 3-PLC ± ± 4-PLC ± ± ANGLES ± ± FINISH SEE TABLE		NAME PCI EXPRESS CARD EDGE CONN. V-TYPE	
MATERIAL △		PRODUCT SPEC 108-5847	RESTRICTED TO
		APPLICATION SPEC	SIZE A3
		WEIGHT	CAGE CODE 00779
		CUSTOMER DRAWING	DRAWING NO C-1612163
			SCALE 4:1
			SHEET 1 OF 2
			REV J

THIS DRAWING IS UNPUBLISHED. RELEASED FOR PUBLICATION FEB ,2003.
 © COPYRIGHT 2003 BY TYCO ELECTRONICS CORPORATION. ALL RIGHTS RESERVED.

LOC	DIST	REVISIONS			
P	LTR	DESCRIPTION	DATE	DWN	APVD
DW		SEE SHEET 1	-	-	-



- 5 THIS DIMENSION IS ONLY APPLIED TO PRSNT PINS.
- 6 CARD THICKNESS APPLIES ACROSS TABS AND INCLUDES PLATING AND/OR METALIZATION.
- 7 CHAMFER EDGES MUST BE FREE OF CUTTING BURRS.
- 8 NO TIE BAR PERMITTED FROM CARD EDGE TO LEADING EDGE OF PAD FOR PRSNT PIN.
- 9 APPLICATION NOTE;
GOLD CONTACT PAD : ELECTROLESS GOLD PLATING 0.05μm MIN. OVER ELECTROLESS Ni PLATING 2μm MIN.



PCB PATTERN LAYOUT

MODULE LAYOUT(MATING PART ONLY)

	A1,B17,B31,B48,B81	89	72.15	73.15	70	164	16
	A1,B17,B31,B48	56	39.15	40.15	37	98	8
	A1,B17,B31	39	22.15	23.15	20	64	4
	A1,B17	25	8.15	9.15	6	36	1
	PRSNT PIN	C	B	A	N	POS.	PORT

THIS DRAWING IS A CONTROLLED DOCUMENT.

DIMENSIONS: MM	TOLERANCES UNLESS OTHERWISE SPECIFIED:	DWN	tyco Electronics		Tyco Holdings (Bermuda) VII LTD, Taiwan Branch	
	0-PLC ± ±0.13	CHK	NAME			
	1-PLC ± ±1	APVD	PCI EXPRESS CARD EDGE CONN. V-TYPE			
	2-PLC ±	PRODUCT SPEC	SIZE	CAGE CODE	DRAWING NO	RESTRICTED TO
	3-PLC ±	APPLICATION SPEC	A3	00779	C-1612163	-
4-PLC ±	ANGLES	WEIGHT	CUSTOMER DRAWING		SCALE	SHEET
FINISH					8:1	2 OF 2